



# South Texas College Budget

For Fiscal Year 2011-2012



# **South Texas College Budget**

**Fiscal Year 2011-2012**



**Hidalgo County and Starr County, Texas**

**South Texas College**  
**Budget**  
**For The Fiscal Year Ending August 31, 2012**

**TABLE OF CONTENTS**

**INTRODUCTORY SECTION**

Board of Trustees .....	1-3
Executive Staff.....	4
Comprehensive Mission: Vision, Purpose, Core Values, Guiding Principles & Strategic Directions .....	5
Fact Sheet 2011-2012 .....	6
Programs of Study 2011-2012 .....	7
Summary of Fall Semester Headcount, Unduplicated Annual Headcount and Annual Full Time Equivalent (FTE).....	8
Summary of Revenues and Transfers and Expenditures, Transfers and Contingencies by Fund - Current and Plant Funds .....	9

**UNRESTRICTED FUND REVENUES**

Revenues by Source - Pie Chart.....	12
Revenues by Source - Comparison of Previous Fiscal Year with Fiscal Year Ending August 31, 2012 - Pie Chart .....	13
Summary of Revenues - Budget and Actual - Comparison of Previous Fiscal Years with Fiscal Year Ending August 31, 2012 .....	14

**UNRESTRICTED FUND EXPENDITURES**

Expenditures by Function (Without Transfers and Contingencies) - Pie Chart.....	16
Expenditures by Function - Comparison of Previous Fiscal Year with Fiscal Year Ending August 31, 2012 - Pie Chart .....	17
Expenditures by Classification - Pie Chart .....	18
Expenditures by Classification - Comparison of Previous Fiscal Year with Fiscal Year Ending August 31, 2012 - Pie Chart.....	19
Summary of Expenditures by Function and Classification.....	20-21

**UNRESTRICTED FUND CAPITAL EXPENDITURES**

Summary of Capital Expenditures by Function and Organization .....	23
--	----

**AUXILIARY FUND**

Summary of Revenues, Expenditures and Transfers - Budget and Actual - Comparison of Previous Fiscal Years with Fiscal Year Ending August 31, 2012 .....	25
--	----

**South Texas College**  
**Budget**  
**For The Fiscal Year Ending August 31, 2012**

**TABLE OF CONTENTS**  
**(Continued)**

**RESTRICTED FUND**

Summary of Revenues, Expenditures and Transfers - Budget and Actual - Comparison of Previous  
Fiscal Years with Fiscal Year Ending August 31, 2012 ..... 27

**PLANT FUNDS**

Summary of Revenues, Expenditures and Transfers ..... 29

**RESOLUTION**

Resolution Adopting the Budget of South Texas College for the Fiscal Year 2011 - 2012 .....31-32

# South Texas College

## Budget For the Fiscal Year Ending August 31, 2012

### Board of Trustees

**GARY GURWITZ**  
CHAIR



Managing Partner, Atlas & Hall, L.L.P., McAllen  
District 4  
Representing North McAllen, Northwest Pharr, Palmhurst, Northeast Mission and Southwest Edinburg (Appointed 1993-1998)  
First Term: May 1998-May 2004  
Second Term: May 2004-May 2010  
Third Term: May 2010-May 2016  
Serves as Chair of the Facilities Committee and is a member of the Finance & Human Resources Committee  
Formerly served as Chair, Vice Chair, and Secretary of the Board

**ROSE BENAVIDEZ**  
VICE-CHAIR



President of Starr County Industrial Foundation  
District 1  
Representing Starr County  
First Term: Nov. 2009 – May 2012  
Serves as a member of the Facilities Committee

**OSCAR LONGORIA, JR.**  
SECRETARY



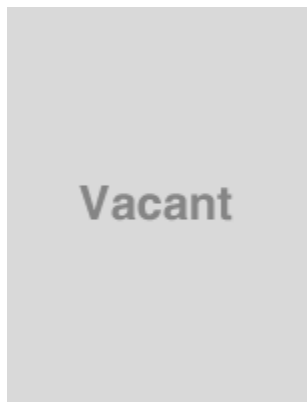
Attorney  
District 2  
Representing La Joya, Western Mission, Palmview, Sullivan City, Penitas and Western Alton  
First Term: May 2009 – May 2012  
Serves as a member of the Education and Workforce Innovation Committee

**South Texas College**  
**Budget For the Fiscal Year Ending August 31, 2012**

**Board of Trustees**

---

**VACANT  
DISTRICT 3**



District 3  
Representing South McAllen, South West Pharr, Hidalgo, Sharyland, Southeast Mission and Granjeno

**DR. ALEJO SALINAS, JR.  
MEMBER**



Clinical Lecturer, University of Texas-Pan American  
Retired Superintendent/Superintendent Emeritus, Hidalgo ISD  
District 5  
Representing North West Hidalgo County, Edinburg, North San Juan and Northeast Pharr  
First Term: May 1996-May 2002  
Second Term: May 2002-May 2008  
Third Term: May 2008-May 2014  
Serves as a member of the Education and Workforce Innovation Committee and the Finance and Human Resources Committee  
Formerly served a member of the Facilities Committee

# South Texas College

## Budget For the Fiscal Year Ending August 31, 2012

### Board of Trustees

---

**JESSE VILLARREAL**  
MEMBER



Parental Involvement Department, Weslaco ISD  
District 6  
Representing Donna, South Alamo, South San Juan, South East Pharr, South Weslaco and Progreso  
First Term: May 2000-May 2006  
Second Term: May 2006-May 2012  
Serves as a member of the Facilities Committee  
Formerly served as Secretary and Vice Chair of the Board

**ROY DE LEON**  
MEMBER



Vice President of Compass Bank– McAllen  
District 7  
Representing North East Hidalgo County, North Weslaco, Edcouch-Elsa, La Villa, North Mercedes, Northeast Alamo, Northeast Edinburg and Hargill (Appointed 1997-1998)  
First Term: May 1998-May 2002  
Second Term: May 2002-May 2008  
Third Term: May 2008-May 2014  
Serves as Chair of the Finance & Human Resources Committee  
Formerly served as Chair of the Board and as a member of the Facilities Committee

**South Texas College**  
**Budget**  
**For The Fiscal Year Ending August 31, 2012**

**EXECUTIVE STAFF**

<b>NAME</b>	<b>POSITION</b>
Dr. Shirley A. Reed, MBA, Ed. D.	President
Jose Cruz, Jr.	Vice President for Information Services and Planning
Diana A. Peña	Vice President for Financial Services
Juan E. Mejia	Vice President for Academic Affairs
Dr. William Serrata	Vice President for Student Affairs and Enrollment Management
Wanda F. Garza	Executive Officer for the North American Advanced Manufacturing Research & Education Initiative



# The Vision, Purpose, Core Values, Guiding Principles, and Strategic Directions Constitute the **Comprehensive Mission** for South Texas College

**VISION** A better quality of life for our communities.

**PURPOSE** South Texas College is a world-class comprehensive institution of higher learning providing premier educational and workforce programs and services in response to the needs of the region.

**CORE VALUES**

- Student Success
- Learning
- Excellence
- Integrity
- Community
- Opportunity

**GUIDING PRINCIPLES**

- Be a premier learning-centered higher education institution where student and community success are paramount;
- Serve as the cornerstone for the economic vitality of South Texas;
- Foster an environment for the students and community to achieve a better quality of life;
- Nurture a culture where collaboration is valued and achievement is recognized.

**STRATEGIC DIRECTIONS**

- South Texas College commits to student learning as the foundation of student success through excellence in teaching and service, faculty and staff empowerment, professional development, and accountability.
- South Texas College proudly provides opportunities to all students with high expectations for their success.
- South Texas College leads the transformation of the region to a “college-going” culture whereby attending and completing higher education is expected for all.
- South Texas College serves as the catalyst for regional economic prosperity and social mobility.
- South Texas College models professionalism through integrity, mutual respect, civility, trust, and collaboration.
- South Texas College champions a culture of excellence based on evidence.

*Approved by the Board of Trustees, September 13, 2007.*





# South Texas College Fact Sheet 2011-2012

## Locations

**Pecan Campus**  
McAllen, TX

**Mid-Valley Campus**  
Weslaco, TX

**Starr County Campus**  
Rio Grande City, TX

**Technology Campus**  
McAllen, TX

**Dr. Ramiro R. Casso  
Nursing & Allied Health  
Campus**  
McAllen, TX

## Executive Staff

**Dr. Shirley A. Reed**  
*President*

**Juan E. Mejia**  
*VP, Academic Affairs*

**Dr. William Serrata**  
*VP, Student Affairs and  
Enrollment Management*

**Jose Cruz, Jr.**  
*VP, Information Services  
and Planning*

**Diana A. Pena**  
*VP, Finance*

**Wanda F. Garza**  
*Executive Officer for the  
North American Advanced  
Manufacturing Research &  
Education Initiative*

## Board of Trustees

**Gary Gurwitz**  
*Chair*

**Rose Benavidez**  
*Vice Chair*

**Oscar Longoria Jr.**  
*Secretary*

**Roy de León**  
*Member*

**Dr. Alejo Salinas Jr.**  
*Member*

**Jesse Villarreal**  
*Member*

## About South Texas College

Founded in 1993, South Texas College is accredited by the Commission on Colleges of the Southern Association of Colleges and Schools to award baccalaureate and associate degrees. More than 30,000 students attend STC, and a faculty and staff of more than 1,600 serve STC's five state-of-the-art campuses.

## Associate Degrees and Certificates

The college offers more than 100 degree and certificate program options in a variety of liberal art, math, social science, science, technology, nursing and allied health fields of study.

## Bachelor of Applied Technology

STC offers Bachelor of Applied Technology degrees in Technology Management and Computer and Information Technologies. The college is the only Texas community college accredited to offer two BAT degrees.

## Dual Enrollment Opportunities

STC has instituted a variety of dual enrollment programs, including early college high schools, drop-out recovery programs, academies and other unique initiatives with high schools throughout Hidalgo and Starr counties. The programs allow eligible students to take college courses with the opportunity to earn certificates and associate degrees while attending high school. Combined, more than 9,000 students are currently enrolled in these programs.

## eSTC Virtual Campus

Through the college's new virtual campus, students not only have access to more than 500 online courses, they can also take advantage of library services, admissions, advising, payment services, financial aid, bookstore and testing. STC also offers 10 online associate degrees options so students never need set foot on an STC campus to earn their degree.

## Continuing, Professional and Workforce Education

The program provides opportunities for lifelong learners who want to upgrade their skills, change careers, renew licenses and certifications, or seek personal enrichment. There is a wide variety of course offerings including online classes. Additionally the division also offers customized training to area businesses, industries and the community. Training programs are tailored to a client's specific needs in terms of content, schedule and location.

## NAAMREI

The college is the fiscal agent and home of the executive offices for the North American Advanced Manufacturing Research and Education Initiative. STC serves as the Regional Institute for Advanced Manufacturing linked to all community and technical colleges in the region. The college has taken the lead in helping train workers to fuel a regional manufacturing economy and to support innovations in advanced, rapid response manufacturing.

## Articulation Agreements

For those students who wish to continue their education beyond an associate's degree, STC has more than 60 articulation agreements in place with colleges across the country.

## Vital Statistics

- o More than 60% of student population are the first in their families to attend college
- o More than 95% of students are Hispanic
- o More than 75% of students (not including dual enrollment students) take advantage of some form of financial aid
- o Class size averages 26 students per faculty member

In accordance with the Americans with Disabilities Act of 1990, Title IX of the Education Amendment of 1972, and Section 504 of the Vocational Rehabilitation Act of 1973, STC provides accommodations as required by law to afford equal educational opportunities to all people.

For questions about the accreditation of South Texas College contact the Commission on Colleges at (404) 679-4500.

(956) 872-8311

[www.southtexascollege.edu](http://www.southtexascollege.edu)



SOUTH TEXAS COLLEGE  
PROGRAMS OF STUDY  
2011-2012

For the 2011-2012 academic year, STC has 106 degrees and certificates available to its students: 3 Baccalaureate degrees, one Associate of Arts Degree in 18 fields of study, one Associate of Arts in Teaching in 3 fields of study, one Associate of Science Degree in 8 fields of study, 26 Associate of Applied Science Degrees, and 49 Certificates.

## BACCALAUREATE DEGREES

- Bachelor of Applied Technology in Technology Management
- Bachelor of Applied Technology in Computer and Information Technologies
- Bachelor of Applied Technology in Medical and Health Services Management

## BUSINESS & TECHNOLOGY

### ASSOCIATE OF ART DEGREE FIELD OF STUDY

- Business Administration-Transfer Plan

### ASSOCIATE OF APPLIED SCIENCE DEGREES

- Automotive Technology
  - Specialization:
    - GM-ASEP
- Business Administration
  - Specializations:
    - Accounting
    - Banking
    - Import/Export/Logistics
    - Management
    - Marketing
    - Technology Management
- Business Computer Systems
  - Specializations:
    - Computer Specialist
    - Networking Specialist
- Computer Aided Drafting and Design Technology
  - Specializations:
    - Architectural Drafting
    - Civil Drafting
    - Design and Technical Graphics
    - Geographic Information Systems
- Construction Supervision
- Culinary Arts
- Diesel Technology
- Electrician Technology\*
- Electronic and Computer Maintenance Technology
  - Specializations:
    - Computer Maintenance Technology
    - Computer Support Specialist
    - Telecommunication Technology Specialist
- Heating, Ventilation, Air Conditioning and Refrigeration Technology
- Human Resource Specialist
- Legal Office Management
- Office Management
- Paralegal
- Precision Manufacturing Technology

### CERTIFICATES

- Accounting Clerk
- Architectural Drafting
- Automotive Technology
- Banking
- Basic Firefighter
- Civil Drafting
- Combination Welding
- Commercial Cooking
- Computer and Information Technologies Specialist
- Computer and Internet Specialist
- Computer and Network Specialist\*
- Computer Applications Specialist
- Computer Maintenance Specialist
- Computer Support Specialist
- Construction Supervision Assistant
- Design and Technical Graphics
- Diesel Technology
- Electrician Assistant
- Electronic Technology Specialist
- Ford Youth and Adult Training Program
- Geographic Information Systems
- Heating, Ventilation, Air Conditioning and Refrigeration Technology
- Human Resource Assistant
- Information Security Specialist
- Import/Export
- Legal Office Specialist
- Logistics
- Management
- Marketing
- Mechatronics Specialist
- Multimedia Specialist
- Office Specialist
- Plumber Assistant
- Precision Manufacturing Technology
- Structural Welding
- Telecommunication Technology Specialist

## LIBERAL ARTS & SOCIAL SCIENCES

### ASSOCIATE OF ARTS DEGREE FIELDS OF STUDY

- Anthropology
- Communication
- Criminal Justice
- Drama
- English
- Fine Arts
- Graphic Arts
- History
- Interdisciplinary Studies
- Kinesiology
- Language and Cultural Studies
- Mexican-American Studies
- Philosophy
- Political Science
- Psychology
- Social Work
- Sociology

\* Pending approval from the Texas Higher Education Coordinating Board.  
\*\* This is a two-year certificate.

### ASSOCIATE OF ARTS IN TEACHING FIELDS OF STUDY

- EC-6 Generalist
- 4-8 Generalist
- Grades 8-12

### ASSOCIATE OF APPLIED SCIENCE DEGREES FIELDS OF STUDY

- American Sign Language and Interpreter Studies
  - Specializations:
    - Deaf Support Specialist
    - Sign Language Interpreter
- Child Development

### CERTIFICATES

- Child Development
  - Specializations:
    - Infant and Toddler
    - Pre-School
- Trilingual Interpreter (Enhanced Skills Certificate)

## MATH & SCIENCE

### ASSOCIATE OF SCIENCE DEGREE FIELDS OF STUDY

- Biology
- Chemistry
- Computer Information Systems
- Computer Science
- Engineering
- Mathematics
- Physics
- Pre-Pharmacy

## NURSING & ALLIED HEALTH

### ASSOCIATE OF APPLIED SCIENCE DEGREES

- Associate Degree Nursing
  - LVN/ADN Transition
  - Paramedic to RN
- Emergency Medical Technology-Paramedic
- Health Information Technology
- Medical Assistant Technology
- Occupational Therapy Assistant
- Pharmacy Technology
- Physical Therapist Assistant
- Radiologic Technology
- Respiratory Therapy

### CERTIFICATES

- Electronic Health Record Specialist\*
- Emergency Medical Technology-Basic
- Emergency Medical Technology-Intermediate
- Emergency Medical Technology-Paramedic\*\*
- Medical Assistant Technology
- Medical Coding Specialist
- Medical Information/Transcription Specialist
- Medical Office Specialist\*
- Patient Care Assistant
- Pharmacy Technology
- Vocational Nursing

# South Texas College

## Summary of Fall Semester Headcount, Unduplicated Annual Headcount and Annual Full Time Equivalent (FTE)

Academic Year	Fall Semester Headcount	Unduplicated Annual Headcount	Annual FTE
1993 - 94	1,055	2,719	1,318
1994 - 95	2,227	4,720	2,221
1995 - 96	3,254	6,893	3,087
1996 - 97	5,416	9,756	4,696
1997 - 98	6,849	11,861	5,737
1998 - 99	9,598	14,391	7,572
1999 - 00	10,364	15,214	7,901
2000 - 01	11,183	16,793	8,343
2001 - 02	12,443	18,357	9,275
2002 - 03	13,691	20,447	10,173
2003 - 04	15,228	21,927	10,529
2004 - 05	17,035	23,847	11,384
2005 - 06	16,233	23,594	11,147
2006 - 07	18,460	25,423	11,675
2007 - 08	19,808	27,940	12,705
2008 - 09	21,666	30,796	14,162
2009 - 10	26,368	36,211	17,918
2010 - 11	28,006	38,625	19,218
2011 - 12 *	29,000		

\* Projected

**South Texas College**  
**Current & Plant Funds**  
**Summary of Revenues and Transfers and Expenditures,**  
**Transfers and Contingencies by Fund**

**Budget for Fiscal Year 2011 - 2012**

<b>Fund</b>	<b>Revenues and Transfers*</b>	<b>Expenditures, Transfers and Contingencies</b>
Unrestricted Fund	\$ 135,794,770	\$ 135,794,770
Auxiliary Fund	\$ 2,248,515	\$ 2,248,515
Restricted Fund	\$ 74,910,030	\$ 74,910,030
Plant Fund - Unexpended - Construction	\$ 10,524,035	\$ 10,524,035
Plant Fund - Renewals & Replacements	\$ 3,906,802	\$ 3,906,802
Plant Fund - Retirement of Indebtedness	\$ 12,101,784	\$ 12,101,784

\* Amounts may include Fund Balance (Carryover).



This page intentionally left blank.

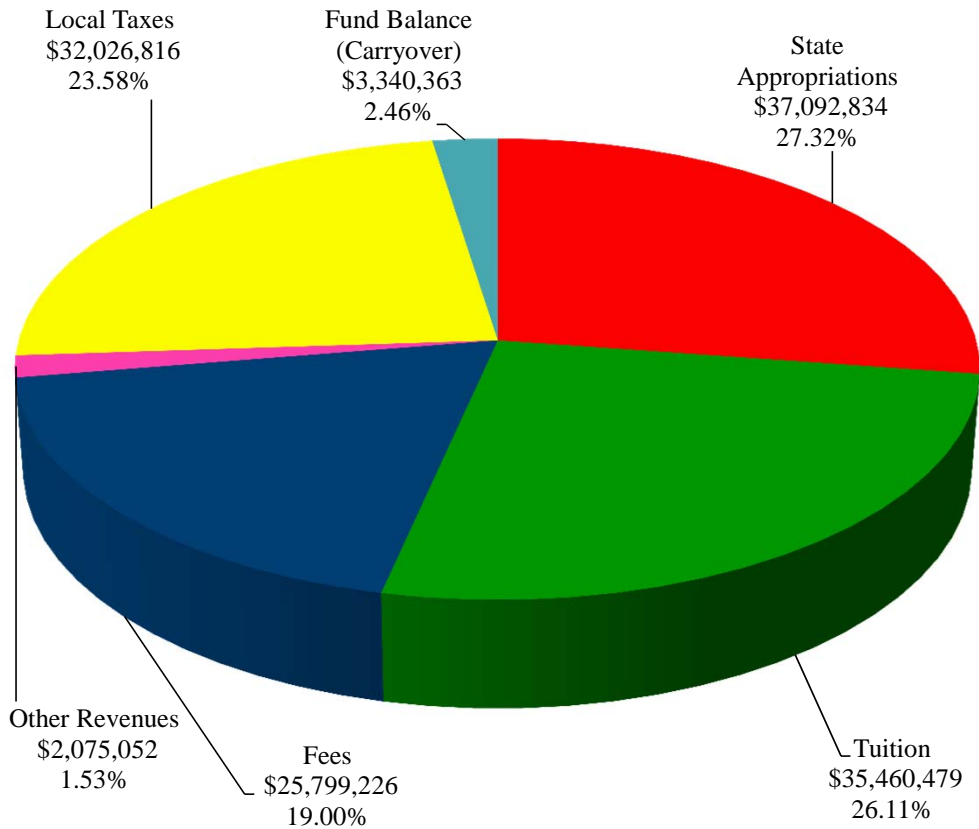


This page intentionally left blank.

# South Texas College Unrestricted Fund Revenues by Source

**Budget for Fiscal Year 2011 - 2012**

Source of Revenues	FY '12 Budget	Percentage
State Appropriations	\$ 37,092,834	27.32%
Tuition	35,460,479	26.11%
Fees	25,799,226	19.00%
Other Revenues	2,075,052	1.53%
Local Taxes	32,026,816	23.58%
Fund Balance (Carryover)	3,340,363	2.46%
<b>Total Revenues</b>	<b>\$ 135,794,770</b>	<b>100.00%</b>

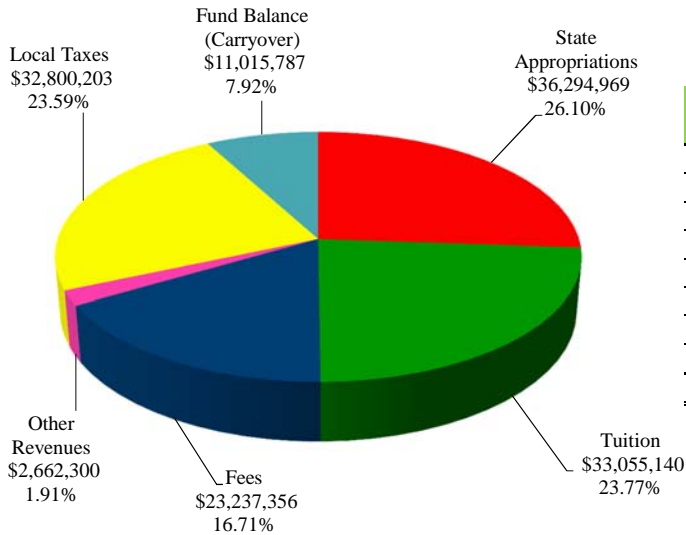




# South Texas College Unrestricted Fund Revenues by Source

## Comparison of Previous Fiscal Year with Fiscal Year Ending August 31, 2012

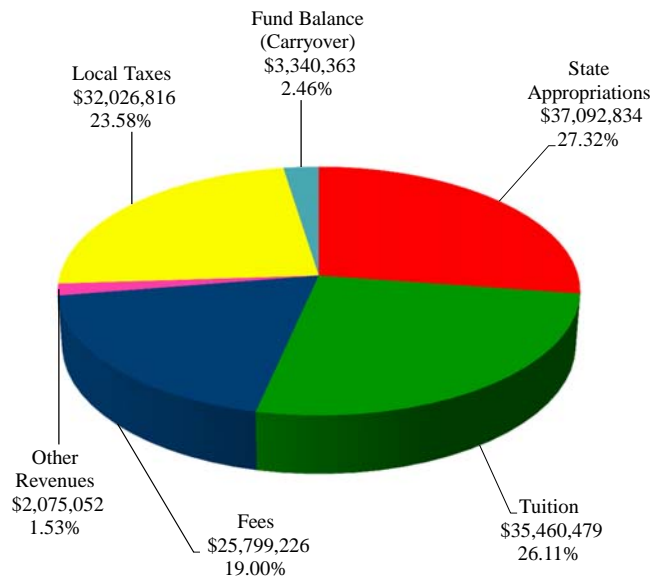
### Fiscal Year 2011



Source of Revenues	FY '11 Budget (As Amended)	Percentage
State Appropriations	\$ 36,294,969	26.10%
Tuition	33,055,140	23.77%
Fees	23,237,356	16.71%
Other Revenues	2,662,300	1.91%
Local Taxes	32,800,203	23.59%
Fund Balance (Carryover)	11,015,787	7.92%
<b>Total Revenues</b>	<b>\$ 139,065,755</b>	<b>100.00%</b>

### Fiscal Year 2012

Source of Revenues	FY '12 Budget	Percentage
State Appropriations	\$ 37,092,834	27.32%
Tuition	35,460,479	26.11%
Fees	25,799,226	19.00%
Other Revenues	2,075,052	1.53%
Local Taxes	32,026,816	23.58%
Fund Balance (Carryover)	3,340,363	2.46%
<b>Total Revenues</b>	<b>\$ 135,794,770</b>	<b>100.00%</b>



**South Texas College**  
**Unrestricted Fund**  
**Summary of Revenues - Budget and Actual**

**Comparison of Previous Fiscal Years with Fiscal Year Ending August 31, 2012**

<b>Revenue Source</b>	<b>FY '10 Budget (As Amended)</b>	<b>FY '10 Actual</b>	<b>FY '11 Budget (As Amended)</b>	<b>FY '11 Estimated*</b>	<b>FY '12 Budget</b>
State Appropriations	\$ 36,907,393	\$ 29,095,388	\$ 36,294,969	\$ 36,696,685	\$ 37,092,834
Tuition	28,449,155	30,320,978	33,055,140	31,778,076	35,460,479
Fees	15,617,715	17,893,924	23,237,356	22,244,667	25,799,226
Other Revenues	2,242,105	2,997,940	2,662,300	2,665,697	2,075,052
Local Taxes	33,244,006	34,314,946	32,800,203	33,100,203	32,026,816
Fund Balance (Carryover)	10,003,136	10,003,136	11,015,787	11,015,787	3,340,363
<b>Total Unrestricted Fund Revenues</b>	<b>\$ 126,463,510</b>	<b>\$ 124,626,312</b>	<b>\$ 139,065,755</b>	<b>\$ 137,501,115</b>	<b>\$ 135,794,770</b>

\* Amounts are estimated. Actual amounts will be available after fiscal year end and completion of audit.

The Unrestricted Fund includes those economic resources of the college which are expendable for the purpose of performing the primary missions of the institution-instruction, research, and public service - and which are not restricted by external sources or designated by the governing board of other than operating expenditures.

Note:  
State Appropriations Revenues include state on-behalf benefits which are budgeted in the Unrestricted Fund and are subsequently transferred to the Restricted Fund along with related expenditures for Annual Financial Report purposes.

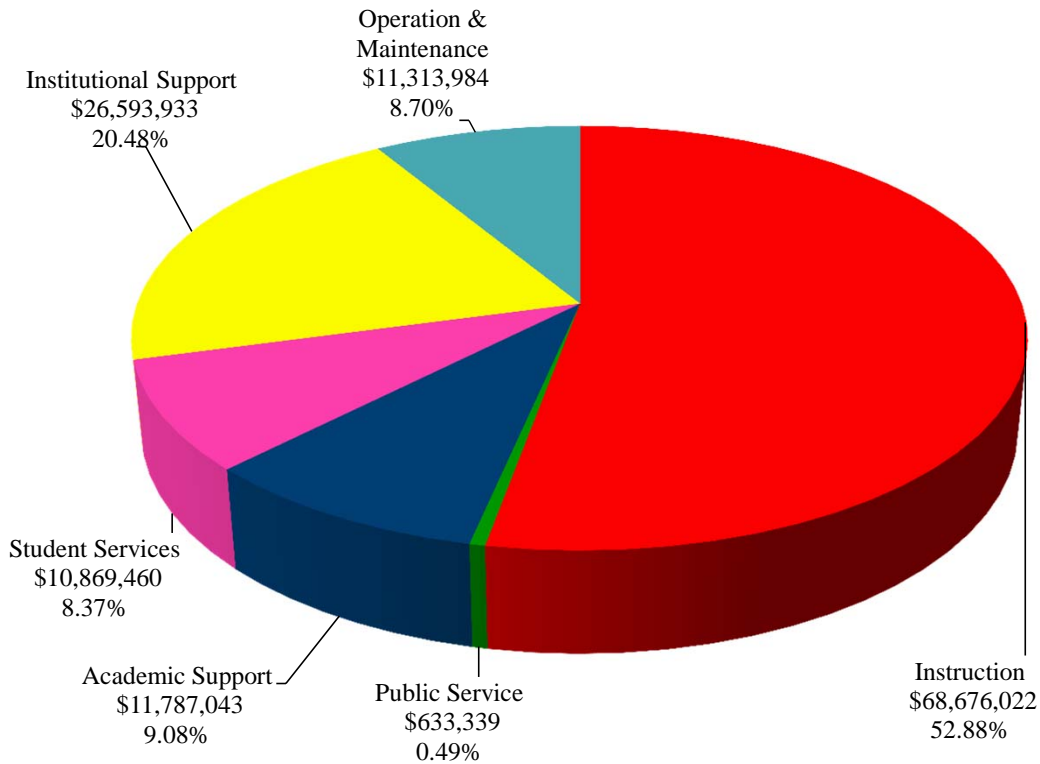


This page intentionally left blank.

**South Texas College  
Unrestricted Fund  
Expenditures by Function  
(Without Transfers and Contingencies)**

**Budget for Fiscal Year 2011 - 2012**

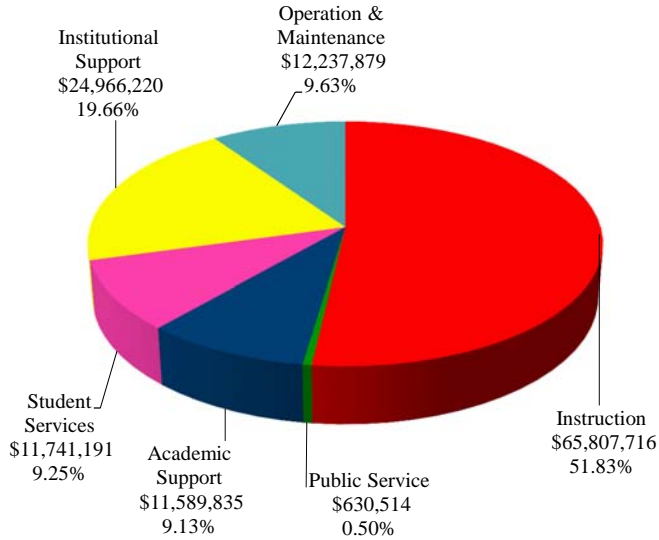
Function	FY '12 Budget	Percentage
Instruction	\$ 68,676,022	52.88%
Public Service	633,339	0.49%
Academic Support	11,787,043	9.08%
Student Services	10,869,460	8.37%
Institutional Support	26,593,933	20.48%
Operation & Maintenance	11,313,394	8.70%
<b>Total Expenditures</b>	<b>\$ 129,873,191</b>	<b>100.00%</b>



# South Texas College Unrestricted Fund Expenditures by Function (Without Transfers and Contingencies)

## Comparison of Previous Fiscal Year with Fiscal Year Ending August 31, 2012

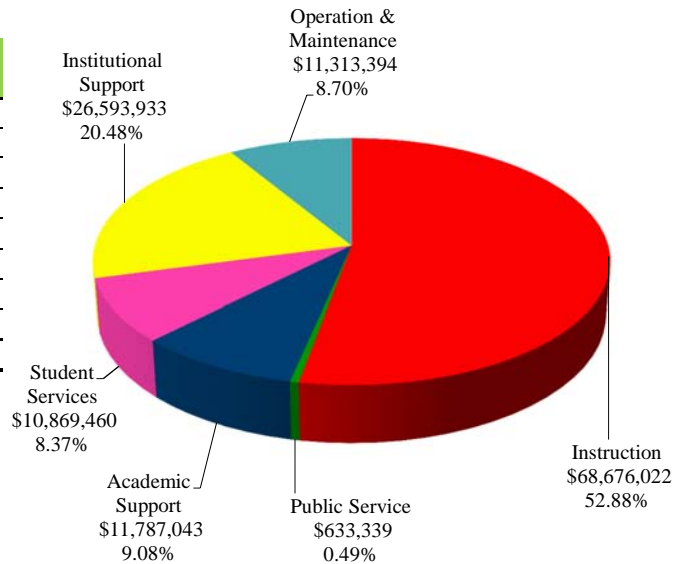
### Fiscal Year 2011



Function	FY '11 Budget (As Amended)	Percentage
Instruction	\$ 65,807,716	51.83%
Public Service	630,514	0.50%
Academic Support	11,589,835	9.13%
Student Services	11,741,191	9.25%
Institutional Support	24,966,220	19.66%
Operation & Maintenance	12,237,879	9.63%
<b>Total Expenditures</b>	<b>\$ 126,973,355</b>	<b>100.00%</b>

### Fiscal Year 2012

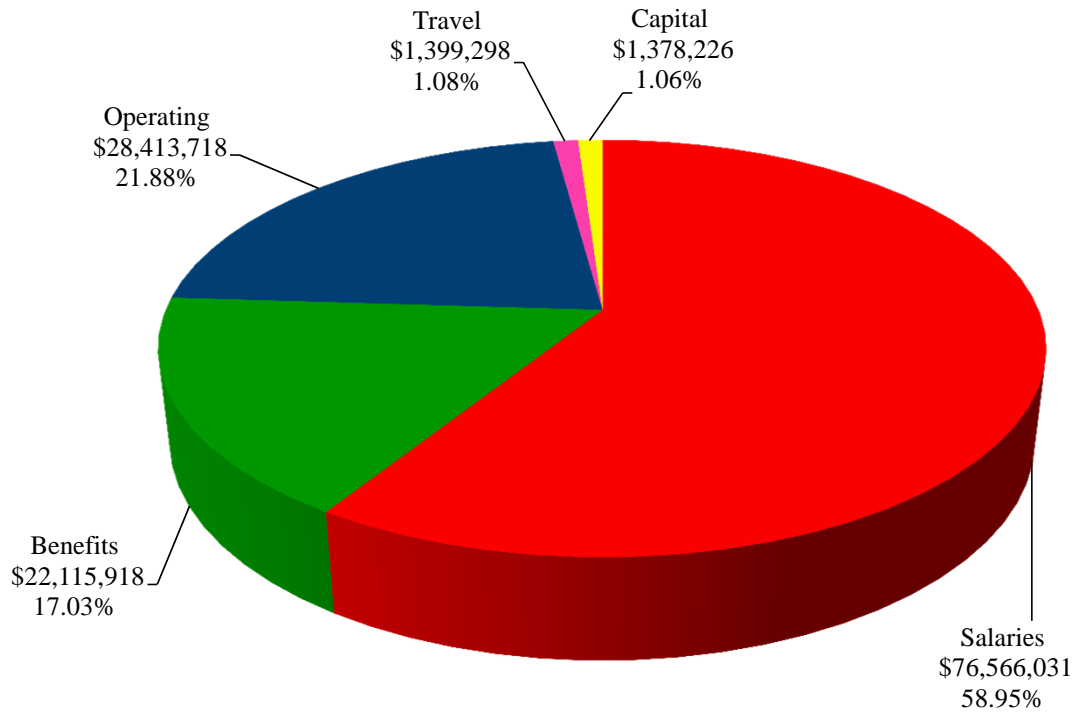
Function	FY '12 Budget	Percentage
Instruction	\$ 68,676,022	52.88%
Public Service	633,339	0.49%
Academic Support	11,787,043	9.08%
Student Services	10,869,460	8.37%
Institutional Support	26,593,933	20.48%
Operation & Maintenance	11,313,394	8.70%
<b>Total Expenditures</b>	<b>\$ 129,873,191</b>	<b>100.00%</b>



**South Texas College**  
**Unrestricted Fund**  
**Expenditures by Classification**  
**(Without Transfers and Contingencies)**

**Budget for Fiscal Year 2011 - 2012**

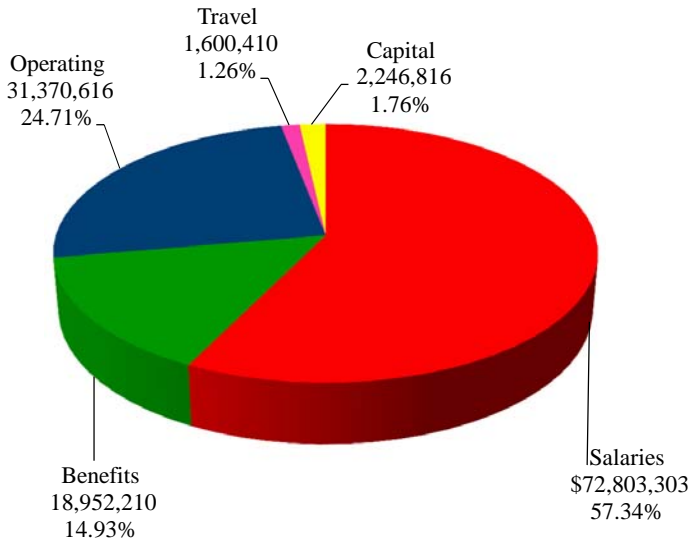
Classification	FY '12 Budget	Percentage
Salaries	\$ 76,566,031	58.95%
Benefits	22,115,918	17.03%
Operating	28,413,718	21.88%
Travel	1,399,298	1.08%
Capital	1,378,226	1.06%
<b>Total Expenditures</b>	<b>\$ 129,873,191</b>	<b>100.00%</b>



# South Texas College Unrestricted Fund Expenditures by Classification (Without Transfers and Contingencies)

## Comparison of Previous Fiscal Year with Fiscal Year Ending August 31, 2012

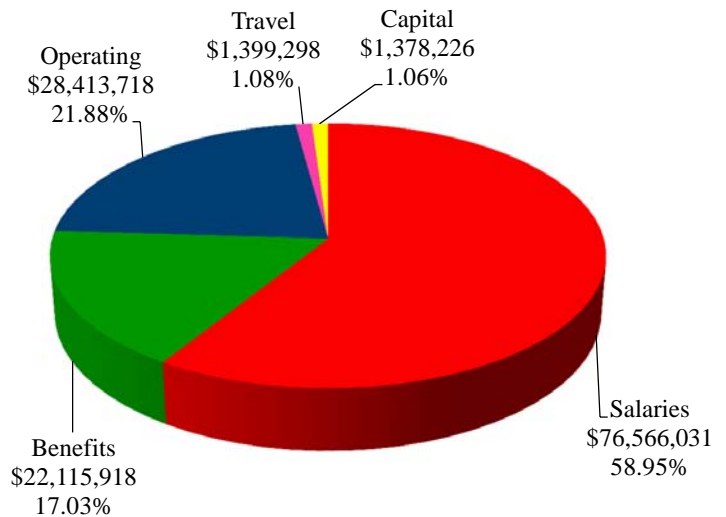
### Fiscal Year 2011



Function	FY '11 Budget (As Amended)	Percentage
Salaries	\$ 72,803,303	57.34%
Benefits	18,952,210	14.93%
Operating	31,370,616	24.71%
Travel	1,600,410	1.26%
Capital	2,246,816	1.76%
<b>Total Expenditures</b>	<b>\$ 126,973,355</b>	<b>100.00%</b>

### Fiscal Year 2012

Function	FY '12 Budget	Percentage
Salaries	\$ 76,566,031	58.95%
Benefits	22,115,918	17.03%
Operating	28,413,718	21.88%
Travel	1,399,298	1.08%
Capital	1,378,226	1.06%
<b>Total Expenditures</b>	<b>\$ 129,873,191</b>	<b>100.00%</b>



**South Texas College**  
**Unrestricted Fund**  
**Summary of Expenditures by Function and Classification**  
**Budget for Fiscal Year 2011-2012**

Function / Classification	Salaries	Percent of Total	Benefits	Percent of Total	Operating	Percent of Total
Instruction	\$ 47,669,951	62.26%	\$ 13,744,504	62.15%	\$ 6,434,317	22.65%
Public Service	343,562	0.45%	61,924	0.28%	194,323	0.68%
Academic Support	6,948,088	9.07%	1,878,817	8.50%	2,522,104	8.88%
Student Services	7,019,048	9.17%	2,030,726	9.18%	1,490,296	5.24%
Institutional Support	11,516,922	15.04%	3,438,716	15.55%	10,528,975	37.06%
Operation & Maintenance - Plant	3,068,460	4.01%	961,231	4.34%	7,243,703	25.49%
<b>Total - Without Transfers &amp; Contingencies</b>	<b>76,566,031</b>	<b>100.00%</b>	<b>22,115,918</b>	<b>100.00%</b>	<b>28,413,718</b>	<b>100.00%</b>
<b>Percent of Total Expenditures Without Transfers &amp; Contingencies</b>	58.95%		17.03%		21.88%	
<b>Transfers and Contingencies</b>						
Transfer-Construction Fund	-		-		2,500,000	
Transfer-PPFCO Debt	-		-		-	
Transfer-MTR Bond Series 2007	-		-		396,400	
Transfer-NAAMREI/IAM	-		-		825,179	
Contingency	-		-		2,200,000	
<b>Total Transfers and Contingencies</b>	-		-		<b>5,921,579</b>	
<b>Total Unrestricted Budget Expenditures/Transfers/Contingencies</b>	<b>\$ 76,566,031</b>		<b>\$ 22,115,918</b>		<b>\$ 34,335,297</b>	
<b>Percent of Total Expenditures With Transfers &amp; Contingencies</b>	56.38%		16.29%		25.28%	



**South Texas College**  
**Unrestricted Fund**  
**Summary of Expenditures by Function and Classification**

**Budget for Fiscal Year 2011-2012**

(Continued)

<b>Travel</b>	<b>Percent of Total</b>	<b>Capital</b>	<b>Percent of Total</b>	<b>Total</b>	<b>Percent of Total Budget W/O Trans/Cont</b>	<b>Percent of Total Budget With Trans/Cont</b>
\$ 675,349	48.26%	\$ 151,900	11.02%	\$ 68,676,022	52.88%	50.57%
33,530	2.40%	-	0.00%	633,339	0.49%	0.47%
229,440	16.40%	208,594	15.13%	11,787,043	9.08%	8.68%
180,048	12.87%	149,342	10.84%	10,869,460	8.37%	8.00%
240,930	17.22%	868,390	63.01%	26,593,933	20.48%	19.58%
40,000	2.85%	-	0.00%	11,313,394	8.70%	8.34%
<b>1,399,298</b>	<b>100.00%</b>	<b>1,378,226</b>	<b>100.00%</b>	<b>129,873,191</b>	<b>100.00%</b>	
1.08%		1.06%		100.00%		
-		-		2,500,000		
-		-		-		
-		-		396,400		
-		-		825,179		
-		-		2,200,000		
-		-		<b>5,921,579</b>		4.36%
<b>\$ 1,399,298</b>		<b>\$ 1,378,226</b>		<b>\$ 135,794,770</b>		<b>100.00%</b>
1.03%		1.02%		100.00%		



This page intentionally left blank.

**South Texas College**  
**Unrestricted Fund**  
**Summary of Capital Expenditures by Function and Organization**

**Budget for Fiscal Year 2012**

<b>Organization Name</b>	<b>Organization Code</b>	<b>Total</b>
<b>Instruction</b>		
Chemistry	221304	30,000
Associate Degree Nursing	224005	72,900
Respiratory Therapy	224025	19,000
Distance Education Technology	520001	30,000
<b>Instruction Total</b>		<b>151,900</b>
<b>Academic Support</b>		
Div Nursing & Allied Health	224013	8,000
Library Acquisition	530002	173,683
BAT and Support Materials	530008	26,911
<b>Academic Support Total</b>		<b>208,594</b>
<b>Student Services</b>		
Admissions & Records	320001	149,342
<b>Student Services Total</b>		<b>149,342</b>
<b>Institutional Support</b>		
Public Information	120000	5,000
Business Office	410013	250,000
Distribution Center	420003	25,000
Inventory Control	420005	45,000
Security	450002	273,590
ITS Project Manager	510005	111,000
Phones Central Office	520002	70,000
Information Technology	520004	80,000
Technology Support	520005	8,800
<b>Institutional Support Total</b>		<b>868,390</b>
<b>Total Capital Expenditures</b>		<b>\$ 1,378,226</b>



This page intentionally left blank.

**South Texas College**  
**Auxiliary Fund**  
**Summary of Revenues, Expenditures and Transfers - Budget and Actual**  
**Comparison of Previous Fiscal Years with Fiscal Year Ending August 31, 2012**

<b>Fiscal Year</b>	<b>Revenues* / Expenditures / Transfers</b>	<b>Budget</b>	<b>Actual**</b>
2009-2010	Revenues	\$ 2,082,215	\$ 1,665,740
	Expenditures and Transfers	\$ 2,082,215	\$ 1,524,087
2010-2011	Revenues	\$ 2,090,528	\$ 2,090,528
	Expenditures and Transfers	\$ 2,090,528	\$ 2,090,528
2011-2012	Revenues	\$ 2,248,515	
	Expenditures and Transfers	\$ 2,248,515	

\* Revenues may include Fund Balance (Carryover)

\*\* Projected for Fiscal Year 2011

The *Auxiliary Fund* accounts for transactions of self-supporting activities. The fund exists to provide goods or services to students, faculty, staff, other institutional departments, or incidentally to the general public. The assessed fee is directly related to, although not necessarily equal to, the cost of the goods or services. Examples include the College bookstore, food service, wellness center, child care center and general conferences.



This page intentionally left blank.

**South Texas College**  
**Restricted Fund**  
**Summary of Revenues, Expenditures and Transfers - Budget and Actual**  
**Comparison of Previous Fiscal Years with Fiscal Year Ending August 31, 2012**

<b>Fiscal Year</b>	<b>Revenues / Expenditures/Transfers</b>	<b>Budget</b>	<b>Actual*</b>
2009-2010	Revenues and Transfers	\$ 59,705,207	\$ 79,931,930
	Expenditures and Transfers	\$ 59,705,207	\$ 78,472,291
2010-2011	Revenues and Transfers	\$ 74,935,579	\$ 74,935,579
	Expenditures and Transfers	\$ 74,935,579	\$ 74,935,579
2011-2012	Revenues and Transfers	\$ 74,910,030	
	Expenditures and Transfers	\$ 74,910,030	

\* Projected for Fiscal Year 2011

The *Restricted Fund* accounts for operating funds that have been restricted for a specific purpose by external parties, grants, contracts, donors, or legislation.



This page intentionally left blank.



**South Texas College**  
**Plant Funds**  
**Summary of Revenues, Expenditures and Transfers**

**Budget for Fiscal Year 2011 - 2012**

<b>Fund</b>	<b>Revenues and Transfers*</b>	<b>Expenditures and Transfers</b>
Plant Fund - Unexpended - Construction Fund	\$ 10,524,035	\$ 10,524,035
Plant Fund - Renewals & Replacements Fund	\$ 3,906,802	\$ 3,906,802
Plant Fund - Retirement of Indebtedness Fund	\$ 12,101,784	\$ 12,101,784

\*Amounts may include Fund Balance (Carryover).

The *Unexpended - Construction Fund* accounts for resources to be used for plant construction or acquisition.

The *Renewals and Replacements Fund* accounts for resources to be used for renewing and replacing facilities on existing College capital assets.

The *Retirement of Indebtedness Fund* accounts for funds held in reserve for paying principal and interest on debt, as well as related costs in accordance with bond indentures.



This page intentionally left blank.

**A RESOLUTION ADOPTING THE BUDGET OF  
SOUTH TEXAS COLLEGE FOR THE FISCAL YEAR  
BEGINNING SEPTEMBER 1, 2011 AND ENDING  
AUGUST 31, 2012 IN ACCORDANCE WITH THE  
PROVISIONS OF THE TEXAS EDUCATION CODE  
AND ORDERING OTHER PROVISIONS RELATED TO  
THE SUBJECT MATTER HEREOF.**

**BE IT ORDERED BY THE BOARD OF TRUSTEES OF SOUTH TEXAS  
COLLEGE, THAT:**

**SECTION I:** The Budget Estimate of revenues for South Texas College District (the "College District") and the expenses of conducting the affairs thereof for the ensuing fiscal year beginning September 1, 2011, and ending August 31, 2012, as submitted by the President of the College, be, and the same is in all things, adopted and approved as the budget of all of the current revenues and expenses for the fiscal year beginning the 1st day of September, 2011, and ending the 31st day of August, 2012.

**SECTION II:** The amount of ad valorem taxes and revenue from other sources, as estimated by the President, is hereby appropriated out of the various Funds for the payment of operating expenses and capital outlay of the College District. A copy of the Budget Summary indicating such revenues and appropriating their expenditures is attached hereto and made a part hereof for all purposes as Exhibit "A" and shall remain on file in the Office of the President.

**SECTION III:** The sums indicated in Exhibit "A" are hereby appropriated in the Unrestricted Fund and College's Debt Service Fund out of the current year ad valorem taxes as collected for the purposes of maintenance and operation of the College District, as applicable, and applying the interest due on the general obligation bonds, redeeming the bonds as they mature, and creating sinking funds as required by such bonds.

**SECTION IV:** All Resolutions or parts of Resolutions in conflict herewith are hereby repealed.

**SECTION V:** This Resolution shall be and remain in full force and effect as of September 1, 2011.

**SECTION VI:** If any part, or parts, of this Resolution are found to be invalid or unconstitutional by a court having competent jurisdiction, then such invalidity or unconstitutionality shall not affect the remaining parts hereof and such remaining parts shall remain in full force and effect, and to the extent this Resolution is considered severable.


**CONSIDERED, PASSED and APPROVED** this 22<sup>nd</sup> day of August, 2011 at a meeting of the Board of Trustees of South Texas College District at which a quorum was present and which was held in accordance with the Texas Government Code Chapter 551.

SIGNED this 22<sup>nd</sup> day of August, 2011.

**SOUTH TEXAS COLLEGE DISTRICT**

By:   
Gary Garwitz, Chairman

ATTEST:

By:   
Oscar Longoria, Jr., Secretary